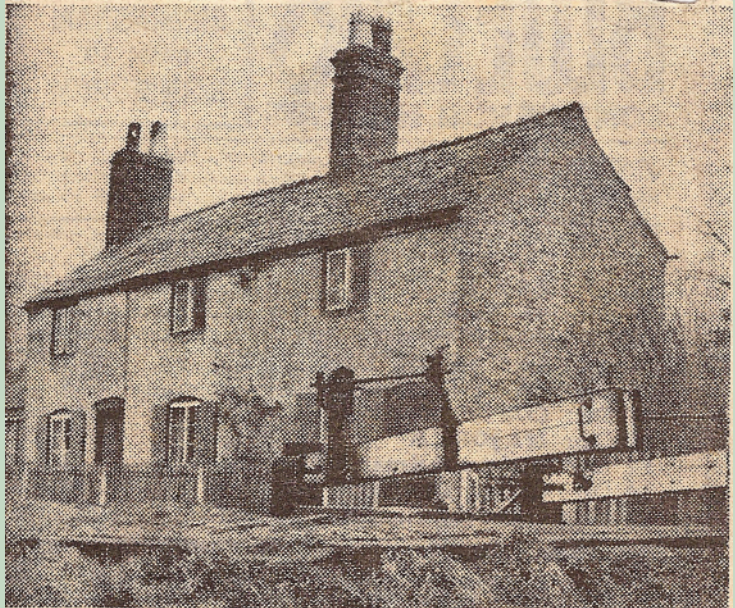


Compton Lock Cottage

I recently noticed this Weaver picture (above) of the lock cottage at Compton Lock on the Staffs & Worcs and I wondered when it had been demolished as I had never seen it.

I asked Tony Gregory and he sent me these press cuttings. Tony apologised that as a youth he hadn't realised the need to preserve the date on the paper but he thought it had been demolished in the early 60s.

Val



Lock Cottage, Compton, which is nearly 200 years old, and is scheduled for demolition. Efforts are being made by the Staffordshire and Worcestershire Canal Society to save the historic cottage.

Canal society bid to save historic cottage

EFFORTS are being made by Staffordshire and Worcestershire Canal Society to save from demolition an historic cottage believed to be nearly 200 years old, which stands by Compton Lock.

Tettenhall Urban District Council made an order several months ago for the dwelling to be pulled down on the ground of inadequate sanitation.

In August the tenants were given a month's notice to quit, but have not yet been rehoused.

CONSIDERABLE VALUE

The society's secretary, Mr. Malcolm Braine, said today that the cottage had considerable historic value.

It was built for the keeper of the first narrow canal lock constructed about 1770 by the pioneer of English canals, James Brindley.

His scheme for joining by canals the four great rivers of the Severn, Mersey, Trent and Thames assumed the form of a St. Andrew's cross with its centre in the Midlands.

Its first section was built from Wolverhampton to Stourport, the first lock being installed at Compton, said Mr. Braine.

"The society thinks the owners, the Inland Waterways, should spend on the cottage the money needed to satisfy the local authority's public health requirements," he went on. "I don't see why a cesspit could not

be installed, as has been done for several new houses in the area.

"We have got to move fast or the place will be down before we know what's happening."

The tenant, widowed 84-year-old Mrs. Annie Beech, has lived in the cottage for the past 62 years, and had hoped to stay there for the rest of her life.

Living with her is her daughter, Dorothy, who was born in the cottage, and a friend of the family, Mr. G. W. Bucknall.

Mrs. Beech's late husband, Arthur, used to operate several canal boats and had a wheelwright's business.

He it was who had the famous canal steamer, the *Compton Queen*, built. Launched in 1897, it was licensed to carry 70 passengers and a crew of three.

It took many thousands of holidaymakers on pleasure cruises along the canal before being broken up in 1930.

Mrs. Beech said that in August Tettenhall U.D.C. gave her a month's notice to quit, but no satisfactory alternative accommodation had been provided for her yet.

"They took me to see a flat in Lower-street, Tettenhall, but it's all-electric which doesn't suit my bronchitis or rheumatism," she explained.

"I really need a place with an open hearth coal fire.