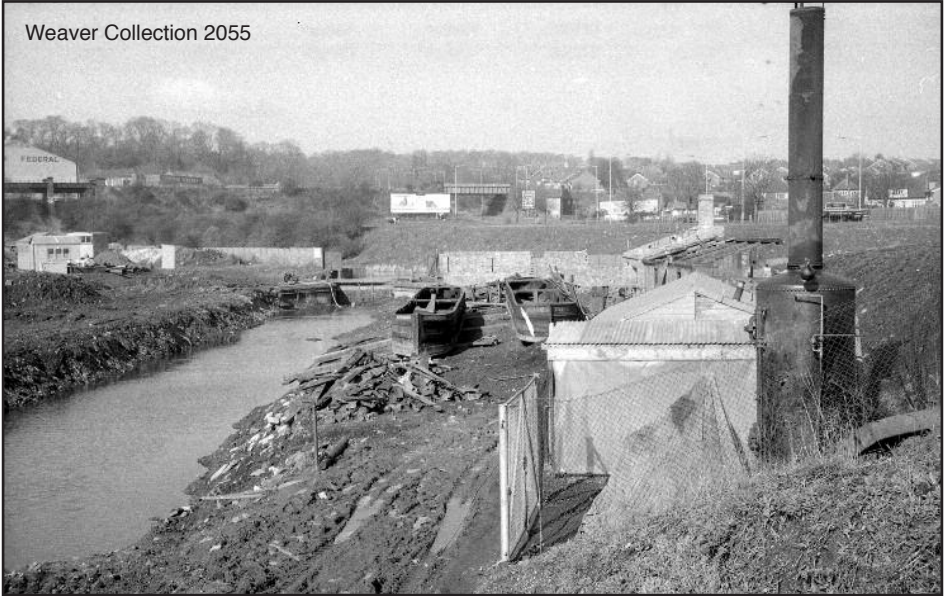


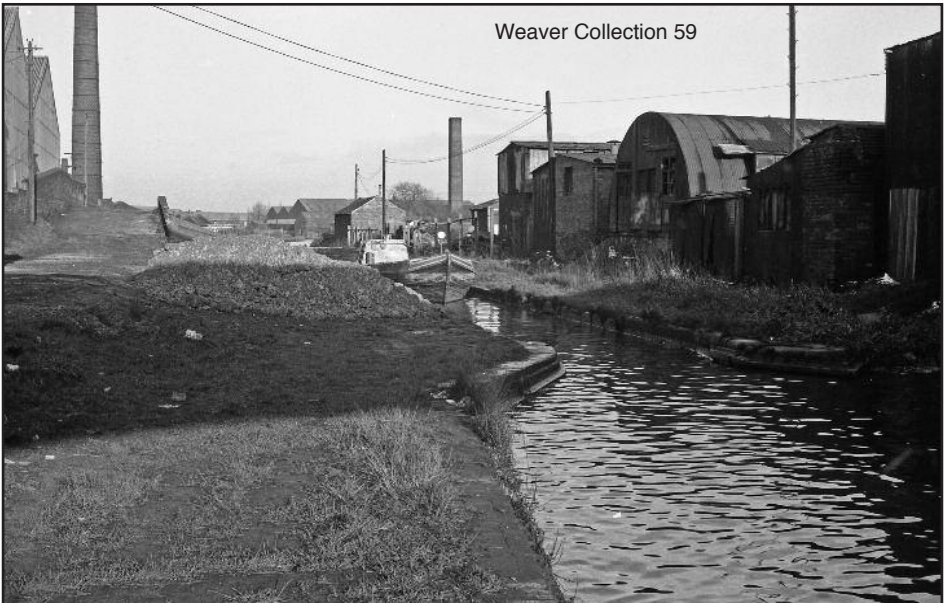


MYSTERY PICTURES



Here we are again, two more of Mr Weaver's pictures for you to puzzle over
The top one you should all know!!

The lower one, we think we have identified it, but we'd like a bit of confirmation from you.



Responses to Mystery Pictures in Previous Issues.

Martin O'Keeffe writes and includes the additional picture on the right:

As regards the mystery picture, the upper one (Weaver 653) is on the BCN Oldbury loop looking towards Birmingham from Church Street Bridge, now Bromford Road. The house is at the end of Poplar Road. See: <http://tinyurl.com/28txuf3>



Colin Scrivener writes:

Another superb newsletter!! Keep up the good work. The house in the top mystery picture is very distinctive and somehow looks familiar but the brain does not go any further.

The lower picture (Weaver 931) is of the top pound of the Newport branch at Norbury and looks just like I remember when we had to put **Hazel** on the new top lock dock in December 1963, as the blades had come off and were lost! I was too interested in getting afloat again to note the boats in the arm.

The **Heather Bell** piece is very interesting. I copied your article and sent it to Jeff Parrott, who lives in Hervey Bay, Queensland. He owned her 1973 to 76 and has written a much fuller history. He was very pleased as it gave him some more facts, particularly of the Wakelin's trip to Stratford in 1964. (*Jeff has kindly given me permission to reproduce his article about the history of Heather Bell, which was first published in the Wooden Canal Boat Society Newsletter. See page 8 - Ed.*) Regarding my picture of the **Hanwell & Eagle**, I cannot remember, or did not know, the name of the family who ran the boats. They ran three boats as the old couple who lived on the butty were the parents of the couple who had the unknown motor on the edge of the picture. Their daughter is the girl in the headscarf on the **Eagle** which was her boat. The other girl is Margaret Lowe, daughter of George and Elsie, who had the **Apple & Ivy** that I was camping on. (see also Malcolm Braine's letter on page 25) The Tardebigge Boat Co's **Susan** regularly passed us when we lived on **Hazel** at Warings Green. I remember having to do a temporary adjustment to the gear box for one set of hirers. It was a pretty rough installation.

Izzie Turner - **Bath**, also identifies the lower picture (Weaver 931):

Very unsure of the mystery pic, if forced to guess we wondered if it was the Shroppie looking out from the branch towards Norbury junction???? Following someone's example, I just looked on Google maps and am now more convinced that my outlandish guess may be right - it still looks possible anyway!

*Yes, you are both correct here. The picture is taken from the head of the top lock (now converted to a dry dock) on the Newport Branch, looking out towards Norbury Junction. The ice breaker in the foreground is **Marbury** which is now in the museum at Ellesmere Port. Ed.*

John Wilkinson - **Water Lily (Kestrel/Ostrich)** writes referring to the lower mystery pic in 2010/3:

I have to confess that you fooled me with the picture of Lock 1 on the Grantham Canal, which is a bit of an embarrassment because I was there! We were on *Cruisealong* with my father-in-law Harold Crew. It was in the days when direct action was much more acceptable than it seems to be now. I believe there was a ceremonial bolt cropping of the chain on the bottom gates and the Sykes Pump (hired for the occasion) was started to provide locking water to the pound above the lock. About a dozen or so boats locked up and spent the night there. I do remember listening for the noise of the pump engine which had to be kept running all night to keep a level.